

crea.lign[®]

Veneering composite



Implant-prosthetic restoration

© 2016 by DT Andreas Lüdke,
Bayreuth, Germany



create natural beauty

Red-White Aesthetics

powered by
visio.lign[®]

visio.lign®

The aesthetic and functional system with unique material options, helping you to create natural beauty, function and physiology. The open system provides flexibility and freedom thanks to six components designed to compliment one another; crea.lign®, novo.lign®, neo.lign®, visio.CAM, visio.paint & bond.lign.

The combination of these components allows a variety of workflows and implant prosthetic solutions, each with perfect results.

visio.lign® - the system for stability and reliability. The result: durable prosthetic restorations featuring colour stability and superior load capacity.

Truly natural and durable

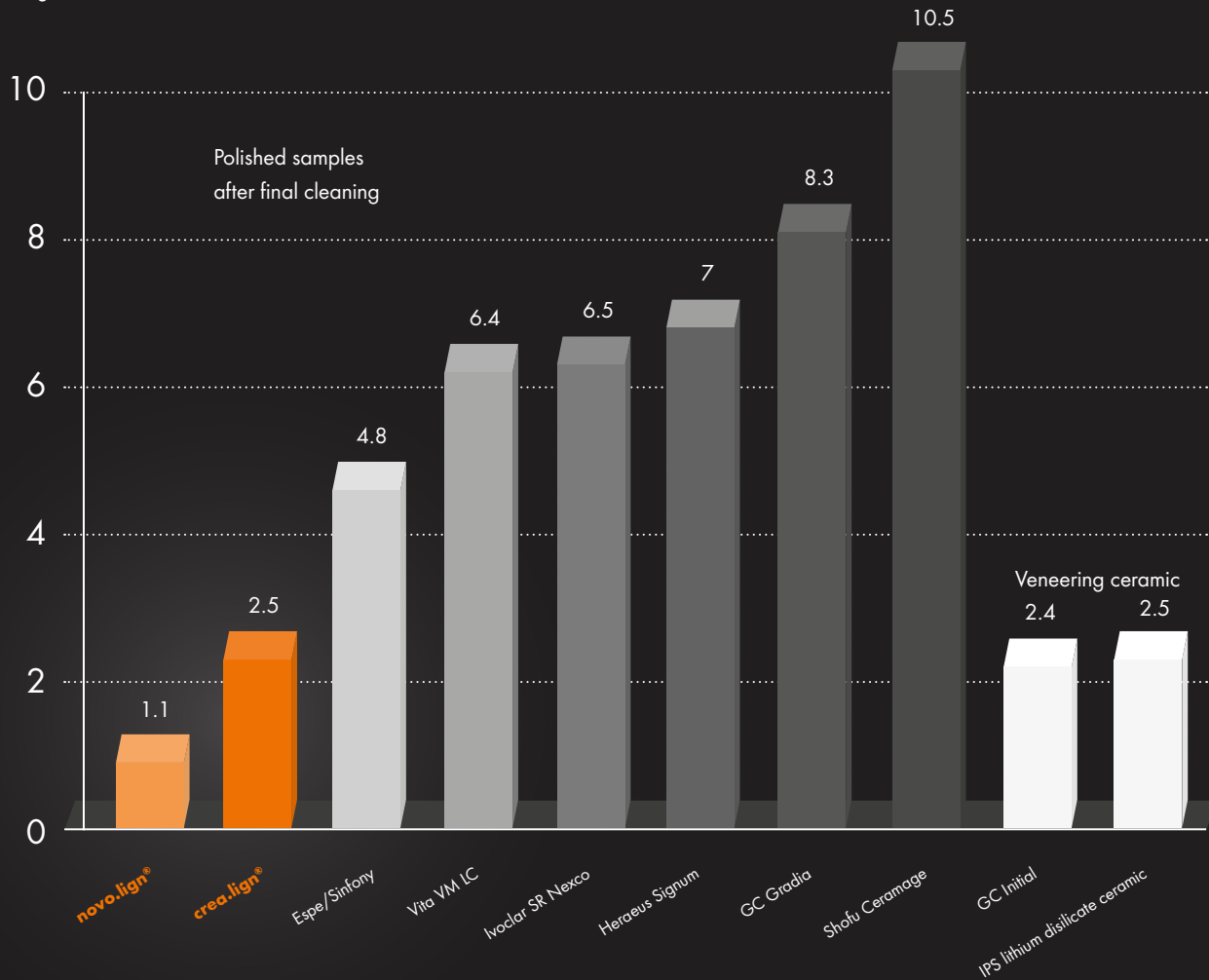
crea.lign®



Δ E - tendency to discolouration

Colouring substances:

Storage in coffee, tea, tobacco, red wine

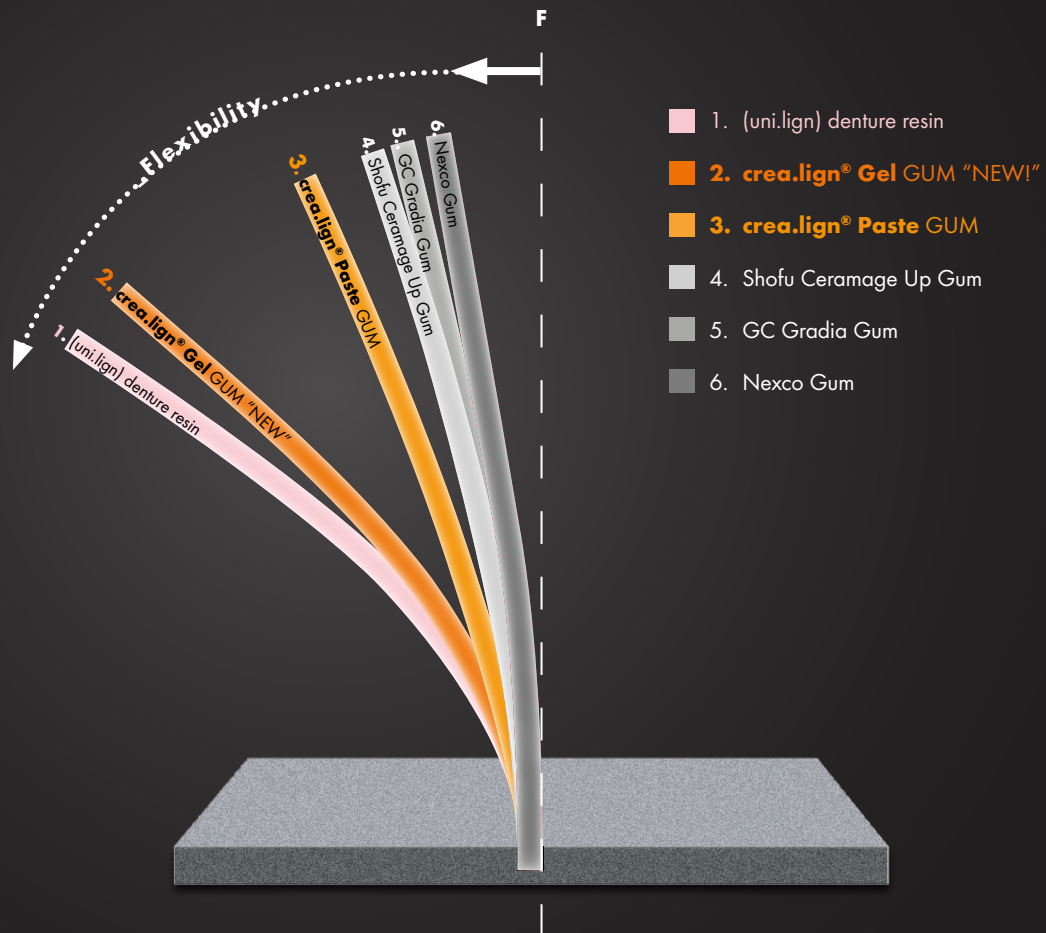


New formula for crea.lign® Gel and GUM (light, pink, rosa, red, lila).

Benefits:

- Durable restorations thanks to high fracture toughness
- No fissures or cracks thanks to elasticity on the level of denture resins
- Unsurpassed curing depth thanks to special light transmission
- Direct layering on BioHPP® is possible, no opaque required (when using visio.link®)
- Natural effect without translucency in the GUM materials
- Convenient modelling thanks to the improved stability of crea.lign® gel
- Simple application of the pastes thanks to the enhanced consistency and reduced tackiness

“Unlimited flexibility”



Red & White with crea.lign®.
Fast. Easy. Durable. Relinable. Extendable.

The solution for:

- implant-supported, fixed or removable permanent restorations,
- natural customisation of full dentures,
- all substructure materials such as BioHPP® and PEEK,
- complete coating even of full-arch restorations (e. g. Prettau bridges)

"Your selection ...



Layering with
crea.lign® Gel

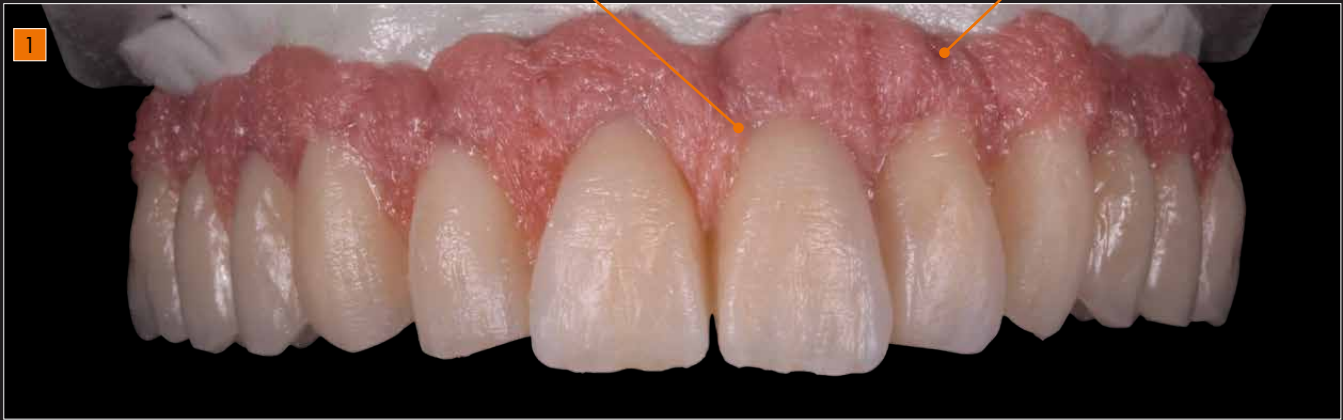
... of technique”



Layering with
crea.lign® Paste

crea.lign®
Paste PL light

crea.lign®
Paste PO opaque



crea.lign® Paste PO (Paste Opaque) is applied in the mucolabial fold and crealign® Paste PL (Paste Light) is applied to the gingival margin. Then the surface is "stippled".

crea.lign® red/lila is filled in the resulting recesses and polymerised. Finally the surface is sealed with crealign® Transpa, smoothed and polymerised (end polymerisation).





crea.lign® Paste



“ *The outstanding modelling properties and natural shade are what I appreciate about crea.lign® GUM Paste. Work can be easily completed and the results are fascinating.* ”



DT Andreas Lüdtkke

crea.lign[®] Gel



crea.lign®
Gel rosa

crea.lign®
Gel light



“ The crea.lign® Gel GUM veneering material takes the benefits provided by substructures made of high-performance polymers to the next level. Feeling in the mouth, aesthetic appearance and durability are a unique combination. ”



MDT Philipp von der Osten

Red-White Aesthetic Set

Individualise your restorations to achieve high-end aesthetics using the crea.lign® GUM materials in the visio.lign® system. Offer your customers this additional individual service and increase the profitability in

your laboratory. Use your dentures to increase the reputation of your laboratory.

REF CLIGNSETG



Contents:

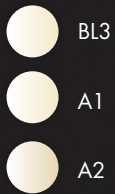
- 5 x 5 g crea.lign® Gel, GUM (light, pink, rosa, red, lila)
- 2 x 3 g crea.lign® Paste, GUM (PO,PL)
- 1 x 5 g crea.lign® Gel, Modifier beige
- 1 x crea.lign® Gel, Transpa clear
- 1 x 4 g crea.lign® Opaque, GUM
- 1 x 10 ml crea.lign® Modelling Liquid
- 1 x 10 ml visio.link®
- 1 x Unique Brush, size 4
- 1 x One-hand use handle with UV LED (crea.lign® Gel)
- 1 x Mixing block
- 1 x Pin Cover + application cannulas
- 2 x Rotary piston (crea.lign® Paste)
- 1 x Layering instructions

crea.lign® Gel or Paste

Dentin



Gel



Paste



crea.lign® Gel

GUM



Gel



crea.lign® Paste

GUM



Paste



crea.lign® Gel

Enamel & Incisal



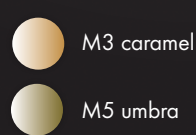
Gel



Modifier



Gel



Transpa Clear



Gel



visio.lign®

The Aesthetic and Functional system

Overview of visio.lign® media



REF 000577GB

crea.lign®
veneering composite
A presentation of this high-end veneering material, its multiple applications and unique properties.



REF 000590GB

bre.Lux
PowerUnit 2
The LED light-curing device is optimised for processing crea.lign® - a short summary of the most relevant information.



REF 000305GB

neo.lign®
Denture teeth
Design and function of the neo.lign® denture teeth will fascinate you. Discover the variety of teeth and select your favourite design.



crea.lign® - veneering composite

The light-curing composite features impressive natural opalescence and unparalleled light transmission for natural beauty.



novo.lign® - veneers

The novo.lign® veneers feature an extended neck and a natural depth thanks to the morphological layer structure. The gold standard in implant prosthetics.



visio.CAM - composite blanks

The material benefits from the visio.lign® system are also available for CAD/CAM processing. The blanks from the visio.CAM line are compatible with the entire visio.lign® system.



neo.lign® - denture teeth

The neo.lign® denture teeth feature the same shades, designs and materials as the novo.lign® veneers – optimised for fixed/removable restorations.



bond.lign - primer/bonder

The primer/bonder system for a permanent and secure chemical adhesive bond between all system components and common framework materials – including BioHPP® (PEEK).



visio.paint - stains

The visio.paint stains enable fast and simple individualisation of veneers.

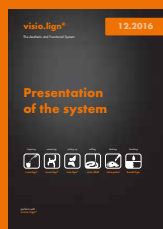


visio.lign®

Info folder

The most relevant materials for the visio.lign® system in a handy info folder.

REF 000274GB



visio.lign®

Presentation

of the system
A compact summary of the variety of products of the visio.lign® system.

REF 009504GB



visio.lign®

Manual

Step-by-step instructions of the various processing techniques and possibilities of the visio.lign® system.

REF 000234GB

crea.lign®

Veneering composite



create natural beauty
Red-White Aesthetics

bredent
group

000651GB-20170124
Subject to errors and changes

